



PIONEER

Health Data Research Hub

NIHR | National Institute for Health and Care Research

NIHR Applied Research Collaborative Dataset Of Ambulance Chest Pain Conveyances

Data range for infographic: 01.04.2023-01.04.2024

Other extended time periods are available on request

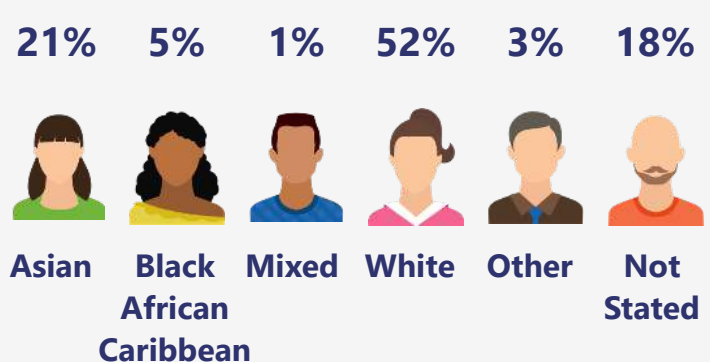
NIHR ARC WM dataset of 49,785 chest pain patients, including demographic data, ambulance triage (WMAS conveyed/non-conveyed), assessments, serial physiology, hospital investigations, treatments and outcomes, linking ambulance and acute hospital data.

Demographic

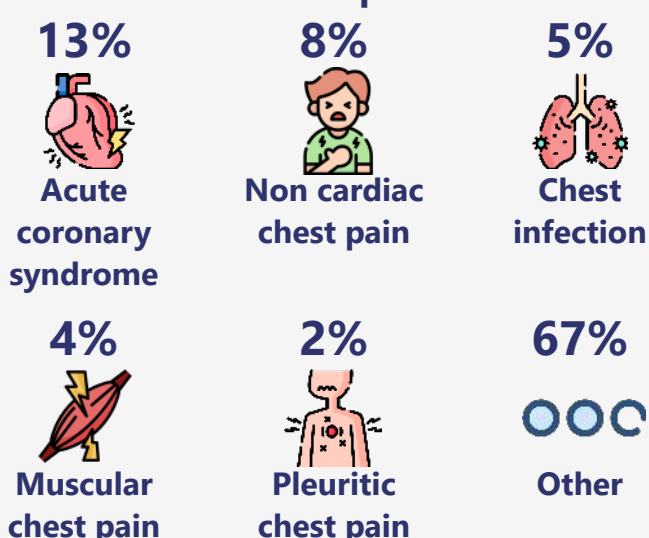
The dataset includes:

- Younger adults **8%** (ages 0-24)
- Adults **64%** (ages 25-64)
- Older adults **28%** (ages 65+)

Based on the index of multiple deprivation map, **55%** of the population are from most deprived areas and **8%** of patients are from least deprived areas.



WMAS impressions



West Midlands Ambulance Service (WMAS)

21K West Midlands Ambulance calls, **16K** WMAS crew callouts with **9K** conveyed to hospital.

Some vital signs done by WMAS includes:

- Heart rate
- Respiratory rate
- Pain score

Other vital signs completed on scene are available.

Top 4 presenting complaint

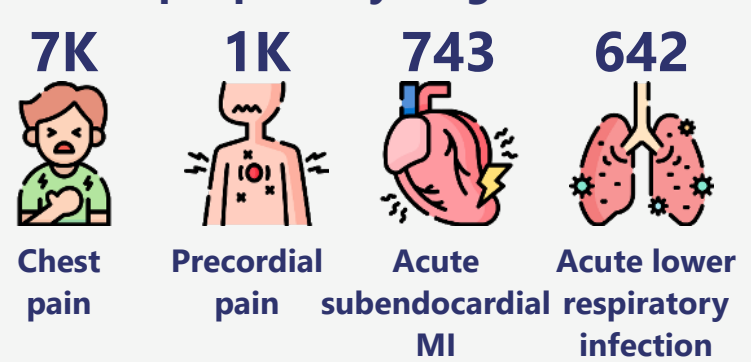


Emergency department

35K emergency department admissions with arrival methods, presenting complaint, diagnoses and investigations.

Other A&E details are available.

Top 4 primary diagnoses



Inpatient

30K Inpatient episodes with admission types, admission method, wards, hospital site, diagnoses and discharge destinations.

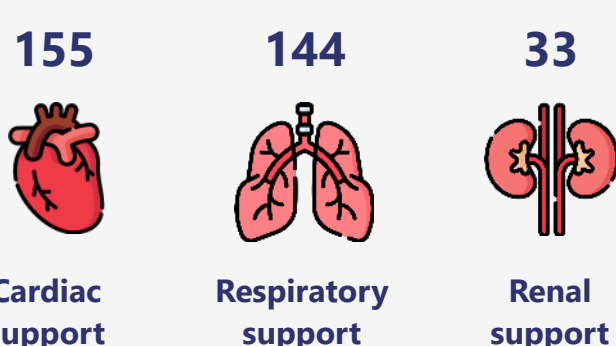
Other Inpatient details are available.

Inpatient care

- 49,785 Hospitalised spells;** containing **37,745** unique patients admitted with chest pain
- 81K** days worth of hospital data with an average in-hospital length of stay of 1 day
- In-hospital mortality rate of 0.5% and 97% of patients surviving 12 months after discharge
- The median National Early Warning Score is 1 and the median Clinical Frailty Scale is 3

Critical care

211 spells admitted to critical care with **1,832** days worth of critical care data and an average of length of stay of **8** days.



Other critical care support are available.

Laboratory tests

- 80K** Albumin
- 59K** White blood count
- 38K** Troponin I
- 36K** D-dimer
- 25K** Cholesterol



Other laboratory tests are available.

Other associated data available upon request

Contact us at:
www.pioneerdatahub.co.uk
pioneer@uhb.nhs.uk