



PIONEER

Health Data Research Hub

An HDRUK And MHRA Dataset: Assessing The Use Of Sodium Valproate In Acute Care

Data range for infographic: 01.01.2018-30.06.2024

Other extended time periods are available on request

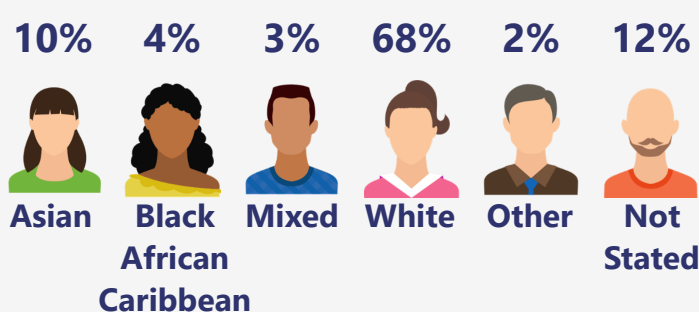
A highly granular dataset of 77,223 acute admissions with epilepsy and bipolar disorder to study the use of Sodium Valproate, including demography, comorbidities, symptoms, serial physiology and investigations, medications (name, dose, route), outcomes.

Demographic

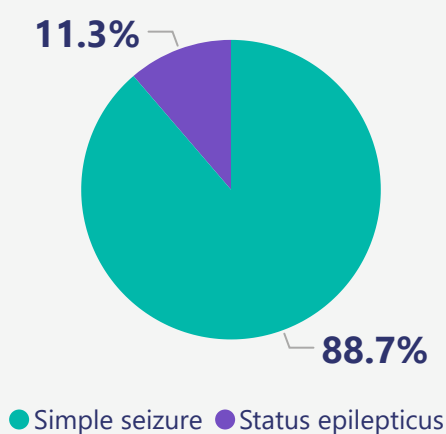
The dataset includes:

- Young adults and children **20%** (ages 0-24)
- Adults **58%** (ages 25-64)
- Older adults **22%** (ages 65+)

Based on the index of multiple deprivation map, **54%** of the population are from most deprived areas and **6%** of patients are from least deprived areas.



Epilepsy presentations



Cohort

- 47,876** spells presented with Mania or referred to psychiatry
- 23,844** spells diagnosed with Epilepsy
- 8,499** spells prescribed Valproate
- 6,195** spells with medical history of Valproate

2M

Prescriptions recorded

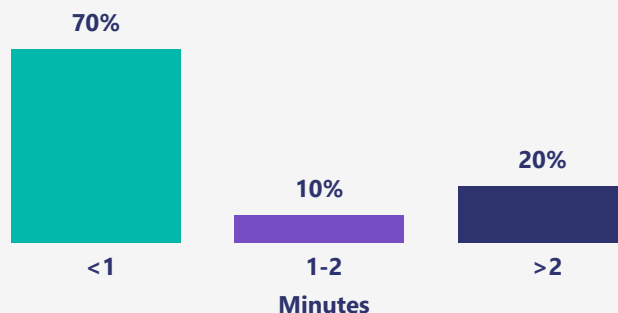


Medications

- 77K** Diazepam prescriptions
- 76K** Midazolam prescriptions
- 74K** Lorazepam prescriptions

Other prescriptions are available.

Seizure duration



Seizure

The median duration for a seizure is 1 minute and the average is duration is 3.5 minutes.

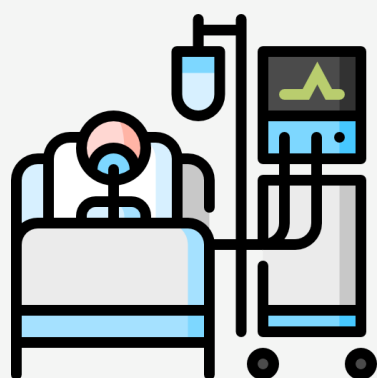
Other seizure details are available.

Inpatient care

- 77,223 Hospitalised spells;** containing **42,571** unique patients admitted to hospital
- 578K** days worth of hospital data with an average in-hospital length of stay of 7 days
- In-hospital mortality rate of 1.7% and 99% of patients surviving 30 days after discharge
- The median National Early Warning Score is 1 and the median Clinical Frailty Scale is 5

Intensive care

Over **3K** ICU admissions with an average length of stay of 13 days.



Other ICU data are available.

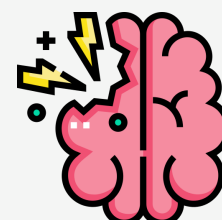
Outpatient admissions

93K



Neurology
clinic
appointments

32K



Epilepsy
clinic
appointments

Other clinics are available.