



PIONEER

Health Data Research Hub

Developing Tools To Prevent Avoidable Admissions For Patients Aged 65 And Older

Data range for infographic: 01.10.2021-30.09.2022

Other extended time periods are available on request

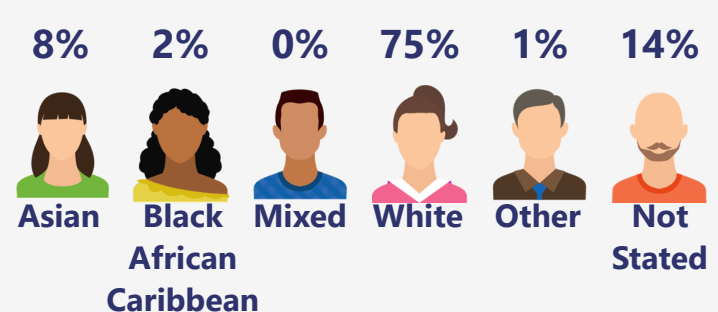
A highly granular dataset of 130,753 Emergency Department presentations for patients aged 65+, curated by PIONEER working with HDR-UK. Includes demographics, serial physiology, acuity, investigations, treatments, and outcomes to study avoidable admissions.

Demographic

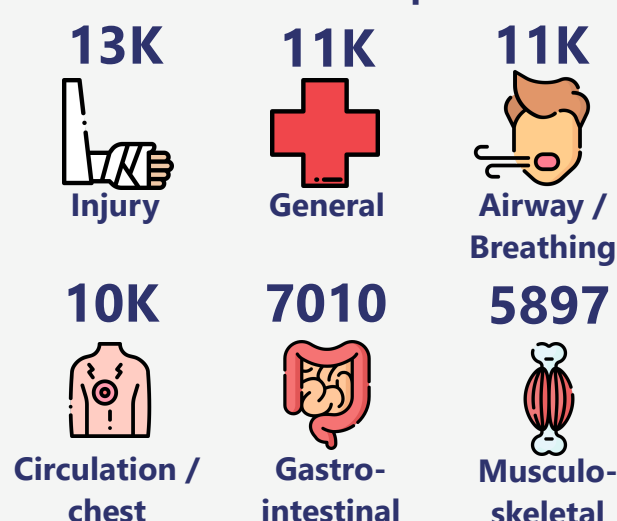
The dataset includes patients aged 65+:

- Female **54%**
- Male **46%**

Based on the index of multiple deprivation map, **31%** of the population are from most deprived areas and **14%** of patients are from least deprived areas.



A&E chief complaint



Diagnoses

5K admissions are diagnosed with seasonal respiratory infections and **2.5K** admissions had seasonal chronic exacerbations.

The top 3 inpatient admission reasons are:

- community acquire pneumonia, **3.4K** admissions
- low risk chest pain, **3K** admissions
- urinary tract infection, **1.6K** admissions

Other chief complaints and diagnoses are available.



A&E investigations

Over **412K** investigations recorded in A&E with the average number of investigations done being **5**. The main urgent investigation is an X-ray.



A&E treatment

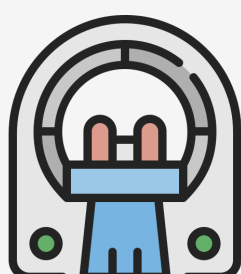
Over **174K** treatments recorded in A&E with the average number of treatments done being **2**. The main urgent treatment is Cardiac monitoring.

Inpatient care

- 130,753 Hospitalised admissions;** containing **49,229** unique patients admitted to hospital
- 445K** days worth of hospital data with an average in-hospital length of stay of 8 days
- In-hospital mortality rate of 4% and 3% of admissions discharged to a care home
- The average number of comorbidities the patient is diagnosed with is 9 with a median of 8

Inpatient procedures

More than **82K** in-patient procedure recorded with the average number of procedure being **1.6**. The main procedure recorded is a CT scan of the head.



Other inpatient procedures are available.

Discharge

1% of A&E attendances are discharged to urgent care and **92%** of A&E attendances are discharged to residence. **89%** of inpatient admissions are discharged to residence.

